

# The Claflin Hill Symphony Orchestra 2023-24 Season Program



## Happy Holidays!

### *Our Twenty-Fourth Season!*

**Symphony concerts at Milford Town Hall in Milford**

**The Homefield Credit Union Jazz Series at Caffé Sorrento**

**The Claflin Hill Apple Tree Arts Chamber Music Series in Grafton**



## The Claflin Hill Symphony Orchestra

*Passionate performances. Masterful musicians.*



Credit Union



Mortgage Lender



Wealth Management



Place to Work

**VOTED**  
**BEST CREDIT UNION!**  
 2021 \* 2022 \* 2023  
 MyFM Quest for the Best



**Homefield  
 Credit Union...  
 Banking  
 With A  
 Homefield  
 Advantage!**



138 S. Main Street  
 Milford, MA

86 Worcester Street  
 North Grafton, MA

508-839-5493  
[homefieldcu.com](http://homefieldcu.com)

*Proud Business Partner of ...*



**The Claflin Hill  
 Symphony Orchestra**

*Passionate performances. Masterful musicians.*



NMLS ID #797006

*A Claflin Hill Business Partner*

For the finest in symphony music,  
anywhere, it's the  
**CLAFLIN HILL SYMPHONY**



**Small, family owned, and still here!**  
**MEDWAY OIL & PROPANE**  
*Proud to partner-up with the Best!*



*Honored supporter of the Claflin Hill Symphony*

**508-533-6561**

**[www.medwayoilpropane.com](http://www.medwayoilpropane.com)**

*A Claflin Hill Business Partner*



# EDAVILLE

Make Some  
Memories at  
Edaville!  
For Event  
Information Visit  
[www.Edaville.com](http://www.Edaville.com)

Edaville is made possible in  
Partnership with the  
Grafton and Upton  
Railroad.

*A Clafin Hill Business Partner*



CLASSIC HITS, LOCAL SPORTS, LOCAL NEWS AND HAPPENINGS  
RED SOX, PATRIOTS, BRUINS, CELTICS, MILFORD LEGION BASEBALL  
WWW.MYFMTODAY.COM - @MYFM1013 ON SOCIAL - MYFM LIVE APP

*Claflin Hill Media Sponsor*

Donate to Claflin Hill!  
Just click here.

*Do you like to sing? Join the chorus!*



Greater Milford Community Chorus

*A Community Use Program*

More information at [www.greatermilfordcommunitychorus.org](http://www.greatermilfordcommunitychorus.org)

**The remedy for FOMO? (aka Fear of missing) out  
Order your tickets RIGHT NOW!**



## Holiday Pop 2023

Saturday, December 9, 2023

## Goulash Delight

Saturday, February 3, 2024



## Latin Salsa Buffet

Saturday, March 9, 2024

## Concert Opera Heritage

Saturday, April 27, 2024



**Clafin Hill Apple Tree Arts  
Chamber Music Series in Grafton**

**Homefield**  
credit union

Banking with a Homefield Advantage.

Homefield Credit  
Union Jazz Series  
at Sorrento Milford



# Note to self:

Call Paul Rao for all my real estate needs. 508-254-5810



**BERKSHIRE HATHAWAY**  
HomeServices  
Page Realty

[paulrao.com](http://paulrao.com)  Serving the area since 1979

  
Does your communication  
hit all the right notes?

Let us craft your message so that  
it's in time, in tune, and on the mark!



**RAO** | Design  
Group  
Information Design & Delivery

[www.RaoDesignGroup.com](http://www.RaoDesignGroup.com)

## *Program Notes for Holiday Pops 2023*

From all seasons to one season, and back again:

It is interesting to note how much of the music of “The Holiday Season”—some of it performed at the Claflin Hill Holiday Pops concert this year—was either composed during different times of the year or originally intended for non-seasonal performances.

Before going into detail about selected carols and other pieces, The Holiday Season itself is difficult, if not impossible to define. A century ago, the “Christmas Buying Season” started on the day after Thanksgiving (today known as Black Friday). The crowds on that first day, whether at State and Madison in Chicago or in front of Macy’s in New York, were enormous.

Thanksgiving itself had been celebrated in many states on the last Thursday of November when, on December 26, 1941 Congress enacted a law making Thanksgiving the fourth Thursday of November, whether it occurred on the last Thursday of the month or not. Merchants have since expanded the season back, first to Veterans’ Day and then all the way back to Halloween.

And it gets even worse. The Hallmark Channel starts showing Holiday movies in September and, perhaps in a satirically defiant vein, Turner Classic Movies (TCM) showed an evening of vintage Christmas movies this past July. Thus the terms “in season” or “out of season” have nearly lost their meanings.

Going back in history to the late Baroque era (ca. 1600-1750) we find the “Hallelujah Chorus,” from the pen of Georg Friedrich Händel (1685-1759) performed today in a variety of different guises--by itself at Pops concerts, at the end of abbreviated *Messiah* sing-alongs (where it wasn’t intended to be), or in its proper place at the end of Part II of the oratorio in a performance of featuring all three parts. Part I of *Messiah* is the Christmas part, Part II is the Passion part and Part III is the Easter part. Händel actually composed *Messiah* in a few short weeks during July and August, 1741—a miracle, so to speak, although he did





borrow a number of love songs he had composed previously (the “Hallelujah Chorus” not being one of them). The premiere of *Messiah* took place not at Christmastime, but at Easter, on April 13, 1742 in Dublin, Ireland, as a charity event in support of the mayor’s fund.

“Sleigh Ride” is another seasonal piece composed entirely out-of-season. Leroy Anderson (1908-1975), a good friend of Arthur Fiedler, was the official Boston Pops composer when he composed the winter classic at his Connecticut home during a heat wave in the summer of 1948!



“Winter Wonderland” is an example of a song that was never intended to be a Christmas song, but gradually became accepted as such. The music is by the American composer Felix William Bernard (1897-1944), a Jew, and the lyrics by Richard Bernhard Smith (1901-1935), an Episcopalian, written while he was being treated for

tuberculosis. The song was first recorded by RCA in 1934. Tragically, Smith died the following year. There is no mention of Christmas in the lyrics. One internet source states that the song was not associated with Christmas until Doris Day’s 1964 Christmas Album. That simply isn’t true. I recall it being sung at Christmastime long before that.

Just as the beginning of The Holiday Season has become difficult to define, so has its end. Most Americans assume a “back to work” mentality on January 2<sup>nd</sup>, though the “12 Days of Christmas” would place the season’s end on January 6<sup>th</sup>, Epiphany, the “12<sup>th</sup> Day of Christmas.” In Latin America “Three Kings Day” is when children receive presents, not so much on Christmas Day. With that in mind, there are three “Epiphany” works that were actually composed as “Christmas” pieces. Thus, while the first three works mentioned can be seen as tending toward an expansion of The Holiday Season, the next three lean to a contraction of two seasons, placing Epiphany into Christmas, just as most Nativity sets do.

The music for “Three Great Kings” was inserted by French composer Georges Bizet (1838-1875) into his incidental music

for the play *L'Arlésienne*, by Alphonse Daudet. It appears in the “Farandole” finale of the composer’s *L'Arlésienne Suite No. 2*. To say that Bizet composed the music isn’t quite right. It was already well-known as a Provençal Christmas carol from Avignon celebrating the Epiphany and the Three Kings. It also has surfaced as the “Marche de Turenne,” attributed to French Baroque composer Jean-Baptiste Lully (1632-1687).

On the other hand, “We Three Kings (of Orient Are)” is entirely American. Pittsburgh-born John Henry Hopkins, Jr. (1820-1891), was a clergyman and a graduate of the General Theological Seminary in New York City, where he became an instructor. He had many talents, playing flute and bugle as well as designing stained glass windows. He composed both the words and music to “We Three Kings” in 1857 for a Christmas pageant held at the seminary. It was published in 1863 in his *Carols, Hymns, and Songs*.

Italian-American Gian Carlo Menotti (1911-2007) was a composer of high standing, marked by his operas *The Medium* and *The Telephone* and for his founding and administering of the Festival of Two Worlds in Spoleto, Italy, and the Spoleto Festival USA in Charleston, South Carolina. On December 24, 1951, Christmas Eve, his *Amahl and the Night Visitors*, an Epiphany opera, was broadcast on NBC. It was the first opera ever written for television.

Finally, as a Coda to the above, the secular song most often identified with The Holiday Season, was first published in 1857 as “The One-horse Open Sleigh.” James Lord Pierpont (1822-1893) composed the song at Simpson Tavern in Medford, Massachusetts, in 1850. A plaque there states that the song tells of the sleigh races held on Salem Street. According to most sources, though dedicated to John P. Ordway, the head of a minstrel

show, the song was written either as a drinking song or to be sung by a Sunday school choir for—ready for it—THANKSGIVING!

Happy Holidays,

Jon Ceander Mitchell





## **Claflin Hill Symphony Orchestra Board of Directors 2023-24**

### *Officers:*

Stephen Chaplin, President	Hopedale
George Roberts, CPA, Treasurer	Medway
Susan Surapine, Clerk	Milford

### *Directors:*

Peter Cardoza, Director	Grafton
Dick Goguen, Director	Holliston
Debrah Hoppe, Director	Milford
Virginia Larkin, Director Emeritus	Hopedale
Deb Moore, Director	Holliston
Paul Rao, Director	Milford
Patty Samon, Public Relations	Franklin
Andy Starkis, Director	Milford
Bernadette Stockwell, Marketing	Littleton
Wayne Stockwell, IT Logistics	Littleton

# **BEST WISHES CLAFLIN HILL SYMPHONY!**

THE DIAMOND AND  
CUSTOM JEWELRY DESIGN EXPERTS  
**FOR 70 YEARS!**



191 Mechanic Street #8, Bellingham, MA 02019 Phone: 508.966.4477

*A Claflin Hill Business Partner*

Dinner Before Symphony ~ Nightcap After  
Be sure to visit

# *Sorrento Milford*

## *Fine Italian Dining*

Brick Oven Pizza, Open for Lunch & Dinner  
Banquet Facilities ~ Lounge



508-473-2460  
143 Central Street, Milford

*A Claflin Hill Business Partner*



**Proud Supporter of**



**The Claflin Hill  
Symphony Orchestra**  
*Passionate performances. Masterful musicians.*



**Charles River Bank**  
Personal Connections. Powerful Solutions.

70 Main Street • Medway • 508.533.8661  
1 Hastings Street • Mendon • 508.422.9792  
2 South Maple Street • Bellingham • 508.966.2857

[CharlesRiverBank.com](http://CharlesRiverBank.com)

Follow us on



Equal Housing Lender

Member FDIC • Member DIF

*A Claflin Hill Business Partner*

# HOLIDAY POPS SING-ALONG

Arranged for Full Orchestra by BOB CERULLI

Please join in and sing these familiar holiday songs with our orchestra.

## 1. SANTA CLAUS IS COMIN' TO TOWN

You better watch out, you better not cry,  
Better no pout, I'm telling you why,  
Santa Claus is comin' to town.

He's making a list and checking it twice,  
Gonna find out who's naughty and nice,  
Santa Claus is comin' to town.

He sees you when you're sleepin',  
He knows when you're awake.  
He knows if you've been bad or good,  
So be good, for goodness sake.

You better watch out, you better not cry,  
Better not pout, I'm telling you why,  
Santa Claus is comin' to town.

## 2. HAVE YOURSELF A MERRY LITTLE CHRISTMAS

Have yourself a merry, little Christmas,  
Let your heart be light;  
From now on our troubles will be out of sight.

Have yourself a merry, little Christmas,  
Make the Yuletide gay;  
From now on your troubles will be miles away.

Here we are, as in olden days,  
Happy golden days of yore;  
Faithful friends who are dear to us  
Gather near to us once more.

Through the years we all will be together,  
If the Fates allow;  
Hang a shining star upon the highest bough,  
And have yourself a merry, little Christmas now.

## 3. RUDOLPH, THE RED-NOSED REINDEER

Rudolph the red-nosed reindeer  
Had a very shiny nose,  
And if you ever saw it  
You would even say it glows.

All of the other reindeer  
Used to laugh and can him names,  
They never let poor Rudolph  
Join in any reindeer games.

Then one foggy Christmas Eve,  
Santa came to say:  
"Rudolph, with your nose so bright,  
Won't you guide my sleigh tonight?"

Then how the reindeer loved him  
As they shouted out with glee:  
"Rudolph, the red-nosed reindeer,  
You'll go down in history!"

## 4. I'LL BE HOME FOR CHRISTMAS

I'll be home for Christmas,  
You can count on me.  
Please have snow and mistletoe  
And presents on the tree.  
Christmas Eve will find me  
Where the lovelight gleams.  
I'll be home for Christmas,  
If only in my dreams.



Keep the music alive!  
Donate to Claflin Hill!

*Your donation goes directly to pay o  
ur talented musicians.*

Thank you for your support!  
More info at [www.claflinhill.org](http://www.claflinhill.org)



## *Bashana Haba'ah*

*by Nurit Hirsch*

### *Translation*

Next year we will sit on the porch  
and count migrating birds.  
Children on vacation will play catch  
between the house and the fields.

You will yet see, you will yet see,  
how good it will be next year.

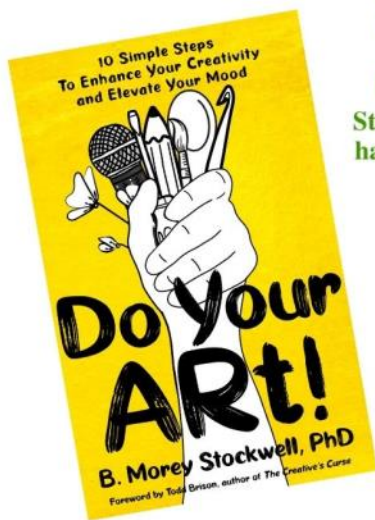
Red grapes will ripen till the evening,  
and will be served chilled to the table.  
And languid winds will carry to the crossroads  
old newspapers and a cloud.

You will yet see, you will yet see,  
how good it will be next year.

Next year we will spread out our hands  
towards the radiant light.  
A white heron like a light will spread her wings  
and within them the sun will rise.

You will yet see, you will yet see,  
how good it will be next year.





You may know Bernadette for her work as Claflin Hill's Director of Development, but did you know that she's also an author? Stop by the membership table at the back of the hall tonight to pick up a copy of her debut book on the creative process.

The perfect gift for all the creative people on your list.

Get one for yourself, too.

Similar to karate's belt rankings, Do Your ART! guides the creative through 10 progressive levels.

This building strategy works for ALL art forms.

Writers, artists, sewists, gardeners, musicians & actors, carpenters and potters, AND bakers and chefs.

## Praise for Do Your ART!

I just finished reading Do Your ART! and I am definitely inspired! I feel like everyone will have their own personal takeaways. For me, the parts that resonated the most are the foundations.

~ Chris Loring, Writer & CEO and Co-Owner, Dirigible Brewing Co.

If you want to get something finished, this book will get you there! Follow Stockwell's concrete steps to travel from idea to manifestation.

~LA Bourgeois, Creativity Coach & Freelance Writer

The processes Stockwell has outlined in Do Your ART! 10 Simple Steps to Enhance Creativity & Elevate Mood illustrate the methods and disciplines that will benefit any creative/performing artist. All who seek to be creative face the same obstacles – self-doubt, ennui, laziness, procrastination, lack of discipline, and fear of failure. Dr. Stockwell's outline helps one overcome self-imposed obstacles. The book provides a daily regimen and routine that, upon examination, has always been evident in the lives of most of the most outstanding creatives in human history.

~Paul Surapine, Founding Executive & Artistic Director, Claflin Hill Symphony Orchestra



Sign up for the  
**Do Your ART!**  
weekly newsletter.

Contact Bernadette at  
[bstockwell@doyourart.org](mailto:bstockwell@doyourart.org)  
Visit [www.doyourart.org](http://www.doyourart.org)

List price: \$19.95  
Holiday Pops  
special:  
**\$15.00 CASH**

**Greater Milford Community Chorus**  
**Mark Schiappucci, Director**  
**Wayne Ward, Accompanist**  
**\*Executive Board Members**

**Alto 1**

Virginia Brennan  
Laura Chapman  
Grace Cherubino  
Gina D'Ottavio  
Dani Larick  
Maureen Letendre  
Nora McRae\*  
Eileen Milton  
Amy Tartakoff  
Lana Vilcinskaskas  
Paige Rowse  
Dorothy Vine  
Jane Wilson  
Ali Wolf

**Alto 2**

Carol Bailey  
Janet Clark  
Laurel Heske\*  
Carolyn Kahn  
Cheryl Piedmonte  
Michelle Reith

**Bass**

Peter Black  
John Donnelly  
Joshua Freehan  
Gregg Manning  
Wayne Stochaj  
Lance Tribe

**Soprano 1**

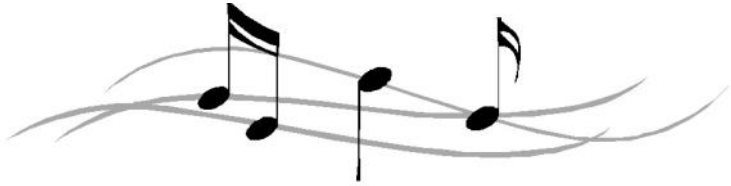
Carly Alden  
Sue Carlson  
Jean DeTore  
Jennifer Kuhl  
Lisa Mather  
Jennifer Russo  
Beth Stochaj  
Susan Surapine\*

**Soprano 2**

Susan Besozzi\*  
Ann Bucchino  
Anna Cherubino  
Katherine Cote  
Susan Dowrey  
Joyce Firth  
Allison Flanagan  
Eydie Gonzalez  
Barbara Rice  
Ursula Roxin-Dixon  
Joanne Roy  
Sandra Seibel  
Linda Taintor  
Kathy Vescera  
Gail Vest

**Tenor**

John Goulart  
Raymond Kuhl  
Jeff Lovell



**Greater Milford Community Chorus**

*A Community Use Program*





## *Holiday Pops in the Dark Ages*

Here we are yet once again, convening on a brisk early December evening to recreate another long-standing tradition from our past collective childhoods and begin the celebration of the Holidays together – as we remember doing as children with the guidance of our parents and grandparents – who themselves carried it forward from long-forgotten ancestors who came from many different lands and cultures. It is good that we do this, and today it is truly important and imperative that we – or **SOMEBODY** – does this in the face of the increasing darkness falling around us.

After all, that **IS** what Christmas and Hanukkah or even the ancient celebration of the “Winter Solstice” is truly about – our parents and forebears – huddled around their ancestral fires – staving off the cold and darkness and waiting for the “light” to return – be it longer days of warm sunshine, milk and honey, or the hopeful coming of a Savior and praying for a better future for their children.

Tonight, as we enter into another Holiday season around the world, we come here together in our little corner of the world to keep the fire burning – even as all around us, the world seems to be descending into another Maelstrom of strife and violent, hateful cataclysm fed by ignorance.

But, how many Christmases or Hanukkahs in history were also celebrated in just such times?? Our surviving grandparents can remember what Christmas in December 1941 must have felt like – with our country suddenly plunged into an already ongoing global conflict for the survival of freedom – and indeed – many of those families were already probably missing members at the Holiday dinner table who had enlisted and gone off to war two weeks earlier. And let it not be forgotten – it was a war that had already been in progress for two Christmases in a row prior to our awakening of evil peril, so just what kind of Holidays had they been celebrating in Europe during 1939 and 1940? I’m sure Hanukkah had already been canceled.

Our world today is a result of what happens when history is rewritten or simply ignored – an endless cycle of re-building and then destroying again.

Tonight – and thru this coming season – what we do here together as a community is as important as the task of those whom we send to stand watch on the walls on these cold, dark nights – far from home, far from their ancestral hearths and far from family. Our “homefront” is the preservation of culture and tradition so that we **WILL** have something to hand off to the next generation and if we give in to the cultural cancellers,

if we give in to apathy, purposeful ignorance and hopelessness – we will fail and all is lost.

I have spent the entire length of my adult working life engaging in building a cultural entity in my community – with the support OF that community and Almighty GOD. I did this so that going forward into an unseeable future, there WOULD be a continuation of the great cultural heritage and traditions I was gifted from my parents and teachers. I dreamed of building an orchestra and an audience for the GREATEST musical masterworks of the past human geniuses – fellow humans like Bach, Mozart, Beethoven, Shostakovich, Copland and so many others. We HAVE done that and more in the past 25 years and our work has been true and honest to that heritage.

But in the end, perhaps the most important moment in every Claflin Hill Symphony season, and in tonight’s concert is that traditional penultimate offering on the program – the moment when we darken the hall and sit – lost in our own personal musings and reveries – as the sounds of Franz Gruber’s simple “Silent Night” flows over us all as a gentle comforting breath from GOD himself.

As someone who has spent over 50 years challenging myself against the greatest and most difficult musical repertoire ever composed – in the end, the simple perfection of this one short work encompasses the entire purpose and vocation of those who call ourselves “musicians to our community” – the ministry of bringing us all together in a moment of “personal stillness” and refreshing our inner spirit and hope that enables us to go out into the world renewed, optimistic and reinforced in our convictions and traditions.

Be not afraid or cowed.

From my home fire – where we celebrate Christmas – I wish you ALL a Good Christmas. And from those of you who celebrate other Holidays, I thank you for your blessings from your hearths and for including me and enriching my life.

Peace.

Paul Surapine

Claflin Hill’s Founder and Executive & Artistic Director

December 9, 2023 A.D.

# *The Claflin Hill Symphony Orchestra*

**Paul Surapine, Founding Executive & Artistic Director**  
**"The Raymond T. Surapine Memorial Baton"**

**Violin I:** Angel Valchinov\*, Concertmaster

Anne Kornfeld\*

*The Florence Della Chiesa Memorial Chair*

Dimitar Krastev

*The Bayiates Violin Chair*

Jenae Starikov

*The Austin & Linda Staheli Memorial Violin Chair*

Susan Holcomb

*The Edilio "Slim" Pagnini Memorial Violin Chair*

Sally Martin

*The Rowe-Starkis Violin Chair*

Lynne Canavan\*

*The Sophie Holt Violin Chair*

Zachary Surapine

*The Surapine Family Violin Chair*

**Violin II:** Margaritka Valchinova\*, Principal

Khanh Trinh

*The Steven J. Trettel Memorial Violin Chair*

Diane Plouffe

*The Lavallee-Ruggiero Memorial Violin Chair*

Gordon Strick

*The Clarice Daniels Southwick Memorial Violin Chair*

Kathryn Haddad

*The Vincent Motuzas Memorial Violin Chair*

Paula Gedraitis

*The Edward & Ruth Horrigan Memorial Violin Chair*

Jagan Nath Singh Khalsa\*

*The Pat & Larry Jeffery Memorial Violin Chair*

Yulia Potvin

*The Burrill Family Violin Chair*

**Viola:** Dimitar Petkov\*, Principal

*The Deborah Levy Memorial Principal Viola Chair*

Lilit Muradyan

*The Greta Magenis Memorial Viola Chair*

Irina Naryshkova

*The Albert E. Rao Memorial Viola Chair*

Steven Sergi

*The Jacqueline Blais Rao Memorial Viola Chair*

Sylvia DiCrescentis

*The Janet Hargraves MacLaren Memorial Viola Chair*

Katelyn Lashley

*The Mohan Family Viola Chair*

**Cello:** Johann Soultis, Principal

*The Jane Holl Memorial Principal Cello Chair*

Kett Chuan Lee

*The Ellen "Ginny" Larock Memorial Cello Chair*

Eleanor Blake

*The Iyavata Barbara Schneider Memorial Cello Chair*

Karin Loewen

*The Cathleen Lane Chair*

Cameron Sawzin

*The Barbara Robinson Memorial Cello Chair*

Domenic Narducci

*The Daly-Soligon Memorial Cello Chair*

Mario Portev

*The Davis Family Cello Chair*

**Bass:** Judy Yaldatel \*, Principal

*The Ashley M. Roberts Bass Chair*

Jack Corbett

*The Alice Hoppe and Nila Surgi Teacher Chair*

Ben Masi

Dan Ronn

**Flutes:** Phyllis Aronson, Principal

*The Stanley W. Aronson Memorial Principal Flute Chair*

Lori Halt\*

*The Wade Barnes Memorial Flute Chair*

Amy Carroll, Piccolo

*The Mulcahy Family Flute Chair*

**Oboes:** Sachiko Murata, Principal

Jared Chapman

*The Margaret Kochon Memorial Oboe Chair*

Joe Halko, English Horn

*The Carole Hirsch Memorial Oboe Chair*

**Clarinets:** Teri Herel\*, Principal

*The Christopher A. Hoppe Memorial Principal*

*Clarinet Chair*

Warren Barnes\*

*The Pasquale Cardillo Memorial Chair*

Todd Brunel, Bass Clarinet

*The Blanchette Family Chair*

Joseph Pisano\*, Bass Clarinet & Saxophone

*The Adelia Maresca Memorial Clarinet/Saxophone Chair*

**Bassoons:** Tracy McGinnis, Principal

*The James D. Morey Memorial Principal Bassoon Chair*

Patty Yee\*

*The Paul E. McWade Memorial Chair*

Jeffrey Freeman, Contra Bassoon

**Horns:** Lucy Colwell, Principal

*The Zabela-Eddins Family Principal Horn Chair*

Susan Winterbottom-Shadday

*The Karen Earhart Memorial Horn Chair*

Jeremy Ronkin\*

Pam Earle

**Trumpets:** Erich Ledebuhr, Principal

*The E. Jacqueline Wild Memorial Principal Trumpet Chair*

Jeffrey Hoefler

*The George West Memorial Trumpet Chair*

Kevin Donegan

*The Tessicini-Coelho Memorial Trumpet Chair*

**Trombones:** Neal Melley, Principal

Douglas Weeks\*

Andrew Knight

*The John Evans Memorial Bass Trombone Chair*

**Tuba:** Paul Chadbourne

*The Dr. Herbert Paul Kagen Memorial Tuba Chair*

**Piano/Keyboard** Wayne Ward

*The Carol Szymanski Memorial Keyboard Chair*

**Harp:** Szu-NingTai, Principal

**Timpani:** Henry Morel\*,

*The Harmon Family Foundation Memorial Chair*

**Percussion:** Pieter Struyk, Principal

*The Claflin Hill Youth Symphonies Chair*

Evan Lattimore \*

*The Anne "Nanci" Goguen Memorial Percussion Chair*

Kevin Plouffe

\* Denotes Claflin Hill Donor Member



# Silken Audio

- Professional Location Recording
- Audio Production

Ken Silber

617-686-1585

[ken@silkenaudio.com](mailto:ken@silkenaudio.com)

[www.silkenaudio.com](http://www.silkenaudio.com)

*The Claflin Hill Symphony Orchestra*  
**“Holiday Pops 2023”**

December 9, 2023

**The Claflin Hill Symphony Orchestra**  
**Paul Surapine, Executive & Artistic Director**

**With**

**The Greater Milford Community Chorus**  
**Mark Schiappucci, Director & Soloist**

P R O G R A M

The Wexford Carol	Traditional English Carol Arr. Richard Lakey
Joyous Carols of Christmas When a Child is Born (Soleado)	Arranged by Joseph Martin and Robert Sterling Fred Jacobson & Zacar Arr. Audrey Snyder
The Christmas Song	Mel Torme & Robert Wells Arr. Bob Lowden
	Mark Schiappucci, Soloist
The Polar Express	Alan Silvestri & Glen Ballard Arr. Jerry Brubaker
Breath of Heaven (Mary’s Song)	Chris Eaton & Amy Grant Arr. Craig Courtney
Hanukkah Song	Israeli Folk Song; arr. Vicki Tucker Courney
Sleigh Ride	Leroy Anderson
Holiday Pops Sing Along	Arr. Bob Cerulli

I N T E R M I S S I O N

Christmas Canon	Johann Pachelbel; Setting by Paul O’Neill Arr. Bob Phillips
	Zachary Surapine, Conductor
The Nutcracker Suite	Peter Ilich Tchaikovsky
March; Dance of the Sugar Plum Fairy; Russian Dance; Arabian Dance; Chinese Dance; Waltz of the Flowers; Pas de Deux	
Bashana Haba’ah	Nurit Hirsch
Festive Sounds of Hanukkah	Arr. Bill Holcombe
Stille Nacht	Arr. Chip Davis
Hallelujah Chorus from “The Messiah”	George Frederic Handel

**We are grateful for our Holiday Pops 2023 Sponsors—**



**The Harmon  
Family Foundation**



OFFICIAL PIANO PARTNER OF THE  
CLAFLIN HILL SYMPHONY ORCHESTRA

---

# FALCETTI PIANOS

NATICK • NASHUA • SPRINGFIELD



**SCHIMMEL**  
ESTONIA®

PREMIUM PRE-OWNED  
STEINWAY & SONS

[falcettpianos.com](http://falcettpianos.com)

*A Claflin Hill Business Partner*

DANA-FARBER/BRIGHAM AND WOMEN'S

---



CANCER CENTER



———— *salutes* ————

THE CLAFLIN HILL SYMPHONY ORCHESTRA

for its commitment to enriching  
the community through music and education.

# Edwards Memorial Funeral Home

*Serving Greater Milford Since 1882*

**44 Congress Street**

**Milford, Massachusetts 01757**

**508-473-0225**

**Joseph F. Edwards Jr.**

**MA License #5725—Type 3 Funeral Director & Embalmer**

[www.edwardsmemorialfuneralhome.com](http://www.edwardsmemorialfuneralhome.com)

[edwardsmemroailfuneralhome@verizon.net](mailto:edwardsmemroailfuneralhome@verizon.net)

*A Clafin Hill Business Partner*

## AREA GLASS Co.

Auto • Home • Commercial

**(508) 478-0209**

**101 Central Street, Milford, MA 01757**

**AreaGlassCo.com**



**AHRONIAN**  
**LANDSCAPING**  
**AND DESIGN, INC.**

## **Mark Ahronian**

President / Designer  
Mass. Certified Horticulturalist

508.429.3844

[mark@ahronian.com](mailto:mark@ahronian.com)

[www.ahronian.com](http://www.ahronian.com)



Milford  
6 Congress St  
508-473-0556

Holliston  
760 Washington St  
508-429-2100



Bright | Jensen  
Agency | Sheehan

INSURANCE

# Congratulations on your 24 Season



The Claflin Hill  
Symphony Orchestra

*Passionate performances. Masterful musicians.*



*A Claflin Hill Business Partner*



*Congratulates  
The Claflin Hill Symphony Orchestra  
for electrifying audiences with great  
performances for 24 years!*



**Frank's Appliance Service**

[www.franksappliance.com](http://www.franksappliance.com)

331 Main Street, Milford, MA 01757

Phone: (508) 473-1309 ~ Sales Phone: (508) 634-8854

[frankw@franksappliance.com](mailto:frankw@franksappliance.com)

**A Tradition of Personal Service and Community Support**



*Since 1950*

**PHIPPS INSURANCE AGENCY**

**80 Main Street—Hopkinton MA 01748**

**HOME~CONDO~RENTER~AUTO~BUSINESS**

**508-435-6388 [www.phippsinsurance.com](http://www.phippsinsurance.com)**

***A Claflin Hill Business Partner***



American Optometric Association

**Dr. Ronald R. Ferrucci  
Dr. Gregory T. Ferrucci  
Dr. Evan E. Tong**

---

**GREATER MILFORD EYE ASSOCIATES, P.C.**

---

Glasses and Contact Lens Fittings

- Family eye care
- Diabetic exams
- Cataract screenings
- Glaucoma screenings

192 West Street  
Milford, MA 01757

Phone: 508.473.0395  
FAX: 508.478.3392



**TIRES ~ BRAKES  
MUFFLERS ~ ALIGNMENT  
STATE INSPECTION  
AUTO SALES**

**RAY GEARA**

**232 West Street, Milford, MA 01757  
PHONE: 508.422.9711 | 508.473.9111  
FAX: 508.381.6182  
EMAIL: raysautomotive232@outlook.com**

*A Claflin Hill Business Partner*



Est. 1887

**MILFORD  
FEDERAL**

*Our Community. Your Bank.*



**MILFORD FEDERAL IS PROUD  
TO SUPPORT THE  
CLAFLIN HILL SYMPHONY  
ORCHESTRA**



"MUSIC IS THE  
UNIVERSAL LANGUAGE  
OF MANKIND."

*~HENRY WADSWORTH LONGFELLOW*



[MilfordFederal.com](http://MilfordFederal.com)



*A Claflin Hill Business Partner*



## Bank where *you* matter.

We know that your priorities, goals, and circumstances are unique. It's our mission to help you work toward a financially secure future by providing the right banking products and financial guidance that fit you.



[centralfcu.com](http://centralfcu.com) | (800) 527-1017

**Our new Milford Branch located at  
82 Prospect Street is now open!**

Federally insured by NCUA.

# Team Rao



## Family Owned & People First Since 1963

### Contact Info

Al Rao: 508-954-8267

Ellen Rao: 508-954-8264



**BERKSHIRE  
HATHAWAY**  
HomeServices

Page  
Realty

Independently Owned and Operated

TeamRao.com • Over 100 years of cumulative experience



**Guerriere &  
Halnon, Inc.**  
ENGINEERING & LAND SURVEYING

#### **CIVIL ENGINEERING:**

Subdivision Design  
Drainage Studies  
"21 E" Site Assessment  
Septic System Design  
Wetland Mapping  
Title 5 Inspections  
Site Planning

#### **LAND SURVEYING:**

Construction Layout  
ALTA/ACSM Surveys  
Boundary Surveys  
Topographic Surveys  
Condominium Conversion  
Land Court Surveys  
Flood Elevation Certificates

[www.gandhengineering.com](http://www.gandhengineering.com)

333 West St.  
Milford, MA 01757  
(508) 473-6630

55 West Central St.  
Franklin, MA 02038  
(508) 528-3211

*Professional Service Since 1972*

*Clafin Hill Cultural and Educational Partnerships:*

*Apple Tree Arts on Grafton's Town Common*

*CHSO's "most favored community music school"*

*Greater Milford Community Chorus*

*CHSO's partner in chorus performance*

# *The Claflin Hill Symphony Orchestra Da Vinci Society*

## *Legacy and Planned Giving . . . .*

So, you've been supporting CHSO for the past 15 or 20 years, through your annual major gifts, but your body has suddenly dropped below room temperature and you're not going to be able to send in that next Chair Endowment gift.

What happens then – your name drops off the list of donors, and all record of your major investment in the cultural gem you've come to love will be forgotten as the sands of time erase all evidence of your participation.

Over the course of years, some of our Chair Endowment Donors have already invested tens of thousands of dollars through their annual giving.

That is a major and significant investment in the startup of a movement and idea that they believed could take root and growth in our community.

A major and significant investment that we all would hope will be remembered, celebrated and appreciated as future generations come up to enjoy and participate in the cultural edifice that we built together.

One way of insuring that both the organization that we gave birth to, that we built and our significant role in its creation is to explore the avenue of Legacy Planned Giving.

A Legacy Gift can be included as part of your Living Will, and can be designated to support whichever specific aspect of Claflin Hill that you wish to endow – a permanent Chair Endowment in Perpetuity of at least \$25,000 names that Chair forever, with the interest gained on that gift funding the chair each year at the Chair Donor Level.

Larger Gifts can fund in perpetuity Principal Chairs in the Orchestra, The Podium, and even support concert series, concert events, Youth Orchestra scholarships and more.

A Legacy Donor can create their own Legacy – that will be remembered, and enjoyed by our descendants for generations to come.

All Major Legacy gifts will be placed in a permanent restricted Endowment Fund, with only the interest accrued annually begin used to fund the orchestra's growth.

Ask your Financial Planner how you can institute Claflin Hill Legacy Giving as a part of your future bequests. If you don't have a Financial Planner, we have several friends of Claflin Hill, (who are themselves Chair Donors), who can assist you through the process.

**For more information, please visit [www.claflinhill.org](http://www.claflinhill.org) and choose 'DaVinci Society' under *Donate & Support* or call 508.478.5924. Thank you!**



**John Blazys & Victoria Griffin**

**Dr. & Mrs. Charles Shelley**

**Mr. & Mrs. Thomas Wesley**

**Mary Easter & Michael Sammarco**

**The Judy Ann Smith Estate**

**The Catherine L. Coyne Charitable Foundation, Brian  
Murray, Trustee**

**The Judy Ann Smith Estate**

**Boy Scout Troop 18 & Cub Pack 4, Milford**

*In honor of all past members and leaders of this once great Troop*



# Claflin Hill Private Membership Benefits

*Do you work for a company that matches gifts?  
It's a great way to make your donation go even  
further. Plus, you benefit from the combined level.*

Each level of support and privileges extends for one year. Membership is renewable annually. Choice of Orchestra Chair sponsorship is subject to availability.

Your name will be recognized in our program book.

## **Basic Membership (\$35)**

All levels of membership entitle the donor to a 10% discount on ticket purchases. Call the office to obtain your special discount code to use when ordering tickets online. Subscription to "Sharing Notes," The Claflin Hill Symphony Orchestra's Electronic Newsletter including Calendar of Events, Special Notices, and interesting articles.

## **"People of Note" (\$36 - \$199)**

***\$100 receive a free CD of a Claflin Hill concert.***

## **Maestro's Circle (\$200-364)**

The above plus invitations to all Claflin Hill receptions and Special Events. The only "ticket" to these special events.

## **Leadership Aficionado (\$365- 499— start at just a dollar a day!)**

**Become a Micro-Philanthropist and set up weekly donations through your bank's online 'pay bills' service. You'll never have to think about your donation again. Choose the amount and the frequency.**

**Details on the web site— [www.claflinhill.org](http://www.claflinhill.org)**

## **Symphonist (\$500-999)**

All of the above plus invitations to dress rehearsals and to meet with the conductor, composer, and/or soloist. 2 tickets to a symphony concert or your choice.

## **Soloist (\$1,000-2,499)**

**All of the above plus the honor of your name, or the name of a loved one, on an orchestra chair plus 2 season tickets.**

## **Virtuoso (\$2,500-4,999)**

All of the above plus your name or a loved one's name on a Principal Orchestra chair AND 2 more season tickets (4 total) so you don't miss a note!

## **Impresario (\$5,000-9,999)**

All of the above, plus your name, or a loved one's name, on the Concertmaster chair or the Conductor's podium, and listing as an 'ensemble concert' or 'Children's concert' sponsor.

## **Luminary (\$10,000 and above)**

All of the above plus your name as a 'Symphony Concert Sponsor,' and special acknowledgement in all flyers and advertising, along with the opportunity to arrange a chamber concert at your private function

## **Special Endowment Gift**

*Please consider the gift of a Special Endowment, which would allow the Claflin Hill Symphony Orchestra to continue its monumental growth and secure a healthy future for Live Music to thrive and flourish in our community for generations.*

# *The Claflin Hill Symphony Orchestra Private Donors*

*Claflin Hill gratefully acknowledges the following Annual Fund donations and gifts,  
pledged between May 1, 2023 and April 30, 2024*

*If you would like to become a member of our "Donor Family,"  
kindly contact Claflin Hill at 508-478-5924 or e-mail us at [psurapine@claflinhill.org](mailto:psurapine@claflinhill.org)*

## **Luminary Level**

Debrah & Michael Hoppe & Family

## **Impresario Level**

Jacqueline & Warren Barnes ~ Jennifer & Jon Delli Priscoli  
Geri & Steve Eddins

## **Virtuoso Level**

Tim Holl ~ The Honorable Francis & Virginia Larkin  
Shanti Montgomery ~ Norman Schneider ~ Sue Ellen & Robert Szymanski  
Rebecca Wild-Wesley & Thomas Wesley ~ Judy Yaldatel & Ken Rogers

## **Soloist Level**

Joanne & Edward Bayiates  
Mr. & Mrs. Joseph Blanchette  
& Family  
Justine Brewer  
Mr. & Mrs. Greg Burrill  
Stephen Chaplin, Esq.  
Christine & Brian Cooke  
Dr. Roger Davis & Hayla Sluss  
Richard Goguen  
Kristie & Robert Heumann  
Donna Horrigan  
Michael Kagen & Family

Barbara & Kent Kochon  
Mr. & Mrs. Robert Kozubal  
Cathleen & Kevin Lane  
Grace Lavallee  
Marilyn & John Mohan  
Joan & Ed Motuzas  
Carol & James Mulcahy  
Ron Pagnini, Jr. & Family  
Mye & Joseph Pisano  
Sylvia & David Price  
Gail & Paul Rao  
Ellen & Albert Rao  
Karen & George Roberts  
Charles Robinson

Dr. & Mrs. Charles Shelley  
Mary Ann Soligon  
Consuelo & John Staheli  
Virginia & Andrej Starkis  
Helen & Dave Stewart  
Bernadette & Wayne Stockwell  
Susan & Paul Surapine  
Alice & John Tessicini  
Linda & Richard Thorn  
Rosemary Trettel & Family  
Patti & Peter Vangsness  
Marjory West  
Donna & Ed Wolf

## **Symphonist Level**

Julie & Tony Damigella  
Mr. & Mrs. John Gannett  
Charles Learoyd

Adell McWade  
Nancy & Michael Marraffino  
Elizabeth & James Norris  
Beth Surapine

## **Leadership Aficionado**

Lynne Canavan \*\*  
Nan Foley \*\*  
Joyce & Daniel Gilmore

Josephine Guenard  
Anne & Serge Kornfeld\*\*  
Joy S. Perry  
Sandra & Gerald Tosches

Nancy Wojick  
Patty Yee-Cimeno\*\*

## **Maestro's Circle**

Alice & Bill Bissonette  
Betsy & Dick Buma  
Pam & Ernie Chaplin  
Brooks Corl  
Jean & Reno DeLuzio  
Shirley Dennett  
Debbie & Ross Dreyer  
Alicia Franzosa  
James Fritz & Teri Herel\*  
Michelle Gillies  
Lori & Chip Halt \*\*  
Etleva & Eldri Hima-Buli  
Mr. & Mrs. Frank Hoek  
Catherine Holmes  
Avtar & Jagan Nath Singh Khalsa \*\*

Joan Klaski  
Jane & Evan Lattimore \*\*  
Bing Liang  
Janice & Ed Lopes  
Mark Love *in memory of Ronnie & Phillie Pagnini*  
Elsje Macaulay  
Ronda & Bob Matson  
Deborah Moore  
Mr. & Mrs. Henry P. Morel \*\*  
Dan O'Neill  
Jennene Pasquarosa  
Carolyn & Michael Peterson  
Dimitar Petkov \*\*  
Roger Prince  
Abby Ribbans & Family

Jeremy Klein Ronkin  
*in memory of Harriet Bograd*  
Irene Rugoletti  
Jane Schroeder  
Penny & David Simon  
Camilla Sowa  
Kathy A. Stevens  
Christine & Daniel Swtitz  
Bruce Taylor & Cheryl Eidinger-Taylor  
Valerie & Dana Tessicini  
Chen & Angel Valchinov \*\*  
Dorothy & Scott Vine  
Dr. & Mrs. Douglas Weeks \*\*  
Cynthia & Peter Young

## **People of Note**

Ann & Ron Adams  
Carol Bailey  
Joyce Beard  
Orla Berry  
Senator & Mrs. Louis Bertonazzi

William Binette  
Miranda & Peter Black  
Mr. & Mrs. Brian Bodio  
Sherry & Robert Browning, *in memory of Vincent DeMetris*  
Maria & Mark Calzaloia

Geraldine & Gerald Campbell  
Carla Cataldo  
Rose Chapin  
Donna & Richard Coleman  
Maureen Connoles  
Susan Cornelia

Gay & Lou D'Amaro  
Patricia & Charles DiAntonio  
Dr. & Mrs. Carl DiGregorio  
Betsy & Ed Dinero  
Patricia Downes  
Bonnie & Scott Dryden  
Mary & George Duhamel  
Darlene & John Dulude  
Mary Easter & Michael Sammarco  
Charlotte Eckler  
Kathleen Finneran  
Jason Fitzgerald  
Phyllis Foley  
Susan & Philippe Fortin  
Bette & Phil Gladstone  
Josephine Guerino  
Bonnie Haruch  
Anne Hayes  
Catherine Iadarola  
Mary & Felix Janson  
Janis & Eric Korn  
Barbara Kirklauskas  
Donna Kramer  
Danice Larick  
Richard Leblanc  
Peter Light  
Richard Manelis  
Jean Mattila  
Elaine & Ray McNanna  
Anne & Barnes McNevin  
Elizabeth & Wayne Mezzitt  
Fran & Len Morcone  
Gary Moyer  
Megan Mulligan  
Mr. & Mrs. Ralph Nichols  
Mary Oliva  
Dawna & Nicky Oliva *in memory of*  
*Ronnie & Philomena Pagnini*  
Stella Owen \*\*  
Reva & Richard Parrella  
Sue & Carol Pearl  
Laura & John Peters, III  
Nicholas Pilla

Brenda & Peter Pleshaw  
Dr. & Mrs. Michael Popik  
Sheila & Brian Pryhoda  
Catherine Reeve  
Patty & David Samson  
Jeanne & Robert Sampson  
Mr. & Mrs. Robert Sanchez  
Lisa & Mike Sherman  
Nancy & Howard Staples  
Cheryl & Paul Stewardson  
Pieter Struyk \*  
Mary Sullivan  
Carol Surapine  
Barbara Swift  
Carol Ann Thompson  
Doreen Trottier & Brian Arena  
Richard Ulrich  
Concepta Vernon  
Michael Volkert & Margaret Leroux  
Patricia & Chris Ward  
Sharon Whalen  
Sandra White  
James Williams  
George Wilverding  
Susan Wolfe  
Judy & Dan Yasi  
Andrew Zimmerman

#### **Members**

Connie Bilgor  
Judith Costello  
Jeannette Cunniff  
Janice Freniere  
William Givens  
Ryan Hanstad  
Linda Kimball  
Tina & Paul Mangan  
Tom Mantegani  
Paul Matondi  
Nancy & Brian Nichols  
Andrea & Mark Occhionero  
Christine Rogan

Danielle Sarkisian  
Denise Simoneau  
Frances Stone  
Bonnie Thiesing  
Walda Vasile

#### **Donors**

Nancy Ahrens  
Syed Ali  
Leslie Briggs  
Ed Carter  
Beth Chase  
Susan Diomedes  
Sandra Farrell  
Rena Fairbanks  
Dr. Ronald & Joy Ferrucci  
Susan Freimuth  
Marie Georgelis  
Lori & Michael Graham  
Josephine Guenard  
Tasha & Stephen Halpert  
Marcia & Leonard Izzo  
Dean Jacobus  
Vincent James  
Mr. & Mrs. Robert Joyce  
Beverly & William Kavanaugh  
Laura Krovocheck  
Dr. Art Laman  
Janice & Charles Martino  
Jean McClelland  
Joe Michaels  
Pam & Frank Needleman  
Bernard Olender  
Caleb Ricardi  
David Siktberg  
Anne Wasnewski  
Sandra White  
Russ Wiggin  
Susan Winterbottomly-Shadday \*\*

\* Denotes "In-Kind Donation"

\*\*Denotes "CHSO Musician"

**Add YOUR name  
to our list.  
Donate to Claflin Hill!  
Just click here.**

# ***Claflin Hill Symphony Orchestra***

## ***Chair Endowments 2023-24***

*Claflin Hill wishes to extend their gratitude to the following generous benefactors . . .*

**The James D. Morey Memorial Principal Bassoon Chair**

*Gift of Mr. & Mrs. Wayne Stockwell*

**The Florence Della Chiesa Memorial Assistant Concertmaster Chair**

*Gift of The Honorable & Mrs. Francis Larkin*

**The Pasquale Cardillo Memorial Clarinet Chair**

*Gift of Mr. & Mrs. Warren Barnes*

**The Wade Barnes Memorial Flute Chair**

*Gift of Mr. & Mrs. Warren Barnes*

**The Stanley W. Aronson Memorial Principal Flute Chair**

*Gift of Mr. & Mrs. Warren Barnes*

**The Harmon Family Foundation Timpani Chair**

*Gift of the Harmon Foundation and The McNevin Family*

**The Steven J. Trettel Memorial Violin Chair**

*Gift of Rosemary Trettel & Family*

**The Christopher A. Hoppe Memorial Principal Clarinet Chair**

*Gift of Debrah & Michael Hoppe & Family*

**The Edilio "Slim" Pagnini Memorial Violin Chair**

*Gift of Ron Pagnini, Jr. & Family*

**The Karen Earhart Memorial Horn Chair**

*Gift of Professor & Mrs. Charles Shelley*

**The Lavallee-Ruggiero Memorial Violin Chair**

*Gift of Grace Lavallee*

**The Pat & Larry Jeffery Memorial Violin Chair**

*Gift of Avtar Kaur & JaganNath Singh Khalsa*

**The E. Jacqueline Wild Memorial Principal Trumpet Chair**

*Gift of Rebecca Wild-Wesley and Thomas Wesley*

**The Ida M. Tessicini-Arthur F. Coelho Memorial Trumpet Chair**

*Gift of Alice and John Tessicini*

**The Jane Holl Memorial Principal Cello Chair**

*Gift of Tim Holl*

**The Anne "Nanci" Goguen Memorial Percussion Chair**

*Gift of Richard Goguen*

**The Claflin Hill Youth Symphonies Chair**

*Gift of Christine & Brian Cooke*

**The Bayiates Violin Chair**

*Gift of Joanne & Edward Bayiates*

**The Burrill Family Violin Chair**

*Gift of Elsie & W. Greg Burrill*

**The Blanchette Family Clarinet Chair**

*Gift of Donna & Joseph Blanchette*

**The Clarice Daniels Southwick Memorial Violin Chair**

*Gift of Justine Brewer*

**The Zabela-Eddins Family Horn Chair**

*Gift of Geri & Steve Eddins*

**The Mohan Family Viola Chair**

*Gift of Marilyn & John Mohan*

**The Austin & Linda Staheli Memorial Violin Chair**

*Gift of Consuelo, John and Vivian Staheli*

**The Cathleen Lane Cello Chair**

*Gift of Cathleen & Kevin Lane*

The Rowe-Starkis Family Violin Chair  
*Gift of Virginia and Andrej Starkis*

The Mulcahy Family Piccolo Chair  
*Gift of Carol & James Mulcahy*

The Carole Hirsch Memorial Oboe Chair  
*Gift of Kristie & Robert Heumann*

The Adelia Maresca Memorial Clarinet/Saxophone Chair  
*Gift of Joseph Pisano, Jr.*

The George West Memorial Trumpet Chair  
*Gift of Marjory West*

The Janet Hargraves MacLaren Memorial Viola Chair  
*Gift of Gail & Paul Rao*

The Albert E. Rao Memorial Viola Chair  
*Gift of Gail & Paul Rao*

The Jacqueline Blais Rao Memorial Viola Chair  
*Gift of Ellen & Albert Rao*

The Edward & Ruth Horrigan Memorial Violin Chair  
*Gift of Donna Horrigan*

The Ellen "Ginny" Larock Memorial Cello Chair  
*Gift of Norman Schneider*

The Iyawata Barbara Schneider Memorial Cello Chair  
*Gift of Norman Schneider*

The Judith Mushnick Memorial Piano Soloist Chair  
*Gift of Carol & Jeffrey Mushnick & Medway Oil & Propane*

The Daly-Soligon Memorial Cello Chair  
*Gift of Mary Ann Soligon*

The Ashley M. Roberts Bass Chair  
*Gift of Karen & George Roberts*

The Alice Hoppe and Nila Surgi Teacher Chair  
*Gift of Debrah & Michael Hoppe & Family*

The Surapine Family Violin Chair  
*Gift of Shanti Montgomery*

The CHSO Jazz Piano Chair  
*Gift of Stephen Chaplin, Esq.*

The Carol Szymanski Memorial Keyboard Chair  
*Gift of Sue Ellen and Robert Szymanski*

The Greta Magenis Memorial Viola Chair  
*Gift of Linda & Richard Thorn*

The Davis Family Cello Chair  
*Gift of Dr. Roger Davis & Hayla Sluss*

The Margaret Kochon Memorial Oboe Chair  
*Gift of Barbara & Kent Kochon*

The Barbara Robinson Memorial Cello Chair  
*Gift of Charles Robinson*

The Sophie Holt Violin Chair  
*Gift of Patti & Peter Vangsness*

The Dr. Herbert Paul Kagen Memorial Tuba Chair  
*Gift of The Kagen Family*

The Vincent Motuzas Memorial Violin Chair  
*Gift of Joan & Ed Motuzas*

In Support of the CHSO  
*Sylvia & David Price*

The Deborah Levy Memorial Principal Viola Chair  
*Anonymous Gift*

# *Clafin Hill Business Membership Benefits*

Each level of support and privileges extends for one year. Membership is renewable annually.

Choice of Orchestra Chair sponsorship is subject to availability.

Your company name will be recognized throughout the year in our program book.

## **Basic Membership (\$35)**

Subscription to "Sharing Notes," The Clafin Hill Music Performance Foundation's annual Newsletter including Calendar of Events, Special Notices, and articles.

## **"Companies of Note" (\$36 - \$199)**

The above plus a **Clafin Hill framed certificate** acknowledging your philanthropic contribution. Display it at your place of business.

## **Maestro's Circle (\$200-499)**

The above plus 2 tickets to a symphony concert of your choice AND sponsor a Clafin Hill e-mail broadcast, our weekly virtual update on concert events.

## **Symphonist (\$500-999)**

All of the above plus 2 tickets (4 total) to the symphony concert or your choice AND the opportunity to sponsor an issue of Sharing Notes, our quarterly newsletter mailed to over 2,000 friends and associates.

## **Soloist (\$1,000-2,499)**

All of the above plus 2 more tickets (6 total) to a Clafin Hill Symphony concert, and acknowledgement of a partial sponsor of a Family Symphony concert.

## **Virtuoso (\$2,500-4,999)**

All of the above plus be recognized as a partial sponsor of a Clafin Hill concert. AND 4 more tickets (10 total) to a Clafin Hill Symphony concert. Call for details.

## **Impresario (\$5,000-9,999)**

All of the above, plus your company named as a shared sponsor of a Clafin Hill symphony concert. 10 additional tickets (20 total) to share with friends, colleagues and employees. Call for details.

## **Luminary (\$10,000 and above)**

All of the above plus your name as a 'Symphony Concert Sponsor,' and special acknowledgement in all flyers and advertising, along with the opportunity to arrange a chamber concert at your private function AND 30 additional tickets (50 total) to a Clafin Hill Symphony concert. Call for details.

## **Special Endowment Gift**

*Please consider the gift of a Special Endowment, which would allow the Clafin Hill Music Performance Foundation to continue its monumental growth and secure a healthy future for Live Music to thrive and flourish in our community for generations.*

# ***Clafin Hill Business Partners Sponsorships 2023-24***

Shop local and please tell them “Clafin Hill recommended their business.”.

Join this list. Call 508-478-5924 or e-mail psurapine@clafinhill.org

## Luminary (\$10,000 and above)

Homefield Credit Union  
Medway Oil & Propane Company

## Impresario (\$5,000 – 9,999)

CSR Financial Services, LCC  
Edaville Family Theme Park  
Grafton Upton Railroad  
Milford Federal Bank  
Unibank

## Virtuoso (\$2,500 – 4,999)

Brigham & Women’s Hospital  
Central One Federal Credit Union  
Falcetti Pianos of Natick \*  
Gallo Moving & Storage  
Virginia Larkin, Realtor  
Liscombe & Parrella, P.C.\*  
Nitto AVECIA, Inc.  
Ray’s Automotive  
The Aging Space  
MyFM \*

## Soloists (\$1,000 – 2,499)

Benjamin Moore Paints  
Bright Insurance Agency  
Charles River Bank  
The Edwards Memorial Funeral Home  
Hillview Equipment  
Koopman Lumber  
Milford Nissan  
Milford Power  
Milford Rotary Club  
Phipps Insurance Agency  
Richardson Financial Services, Inc.  
David Stewart Painting  
Southwick’s Zoo  
Wolf Law Office, LLC

## Symphonists (\$500 – 999)

Sorrento Milford\*  
Consigli Ruggerio Funeral Home  
Franks Appliances  
Optica of Natick

## Leadership Aficianado (\$365 – 499)

Auto Go  
Marshall’s Jewelers  
Milford Package Store  
Motuzas Automotive, Inc.

## Maestro’s Circle (\$200 – 364)

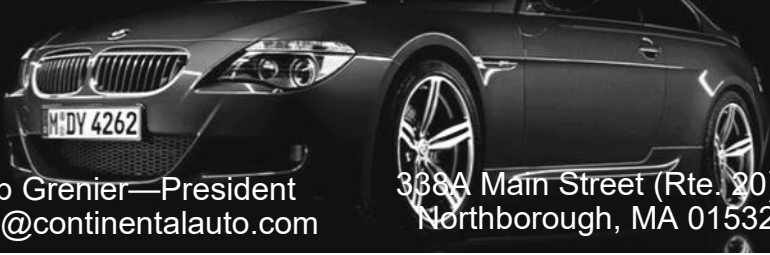
Greater Milford Eye Associates  
Guerriere & Halnon, Inc.  
Oliva’s Market  
Restaurant 45

## Companies of Note (\$100 – 199)

Area Glass  
Bob’s Marine Service  
Continental Auto Sales  
Custom Alarm Service  
Spallone & Son  
Signs Plus  
The Embroidery Bar

\*In kind donation

**Continental Auto Sales Inc.**  
Phone: 508.393.3210 Fax: 508.393.3776



Rob Grenier—President  
rob@continentalauto.com

338A Main Street (Rte. 20)  
Northborough, MA 01532



**WOLF LAW OFFICE LLC**  
REAL ESTATE, WILLS,  
TRUSTS, AND PROBATE

DONNA PALLOTTA WOLF, ESQ.  
Wolf Law Office, LLC  
54 Hopedale Street, Ste 4  
Hopedale, MA 01747  
Phone: 508-473-9800  
Fax: 508-473-9801  
Email: dpwolf@wolflaw.com  
www.wolflaw.com

PROVIDING SERVICES IN REAL ESTATE AND ESTATES

***Dimitar Krastev***

*String Instruments and Bows  
Restoration ~ Repairs and Sales*

*By Appointments only:*  
73 Florence Street, Hudson, MA 01749 \* (857) 269-5777 \*  
***dskrastev@hotmail.com***





Bank **Different.** Bank **Unique.**

# UNIBANK

is a proud sponsor of



The Claflin Hill  
Symphony Orchestra

*Passionate performances. Masterful musicians.*

**Milford Branch**  
91 Prospect Street  
Milford, MA 01757  
508.478.5666

[www.unibank.com](http://www.unibank.com)  
Connecting all offices:  
1.800.578.4270  
Member FDIC

*A Claflin Hill Business Partner*

# New England Steak and Seafood

RT. 16, MENDON, MA



Rt. 16, Mendon, MA • 508.478.0871

[www.nesteakandseafood.com](http://www.nesteakandseafood.com)

[newenglandsteakandseafood](https://www.facebook.com/newenglandsteakandseafood)

Donate to Claflin Hill!  
Just click here.

# DANIELS FARMSTEAD



*Rich in History.  
Gather, Celebrate, Learn.*  
FOUNDATION, INC.



**DANIELS FARMSTEAD 2023 FARMERS MARKET EVERY SUNDAY JULY 2 TO OCT 1**  
286 Mendon Street, Blackstone, MA [WWW.DANIELSFARMSTEAD.ORG](http://WWW.DANIELSFARMSTEAD.ORG)

Thank you to many community sponsors and donors including:



Southwick's Zoo



Galliford's

*A Claflin Hill Business Partner*

## Tokyo Steakhouse

We're back!  
Same great menu. New promotions.  
Call for more options.



**Reservation not required.  
Function room available.**

**121 Depot Street, Milford  
508.478.7788**



Together, anything is possible.

CSR Financial proudly supports the Claflin Hill Symphony Orchestra



Peter Cardoza, CFP®, AIF®  
President  
CSR Financial Services, LLC  
508.839.1040  
pcardoza@csrfinancial.com  
www.csrfinancial.com  
2 Grafton Common  
Grafton, MA 01519

Securities and advisory services offered through Commonwealth Financial Network®, Member FINRA/SIPC, a Registered Investment Adviser. Fixed insurance products and services are separate from and not offered through Commonwealth Financial Network®.

*A Claflin Hill Business Partner*



**SUPPORTS OUR  
LOCAL ARTS!**

**VISIT US ONLINE AT  
KOOPMANLUMBER.COM**

*A Claflin Hill Business Partner*



**Mass  
Cultural  
Council**

This program is supported in part by grants from the **Mendon, Mansfield, Grafton, Holliston, Northbridge, Medway, Hopedale, and Milford Cultural Councils**, local agencies which are supported by the Massachusetts Cultural Council, a state agency.

# LISCOMBE & PARRELLA, P. C.

CERTIFIED PUBLIC ACCOUNTANTS  
and BUSINESS ADVISORS

127A MAIN STREET  
MEDWAY, MA 02053  
(508) 520-2728  
FAX (508) 520-6748

*A Clafin Hill Business Partner*

**Largest CGMP Oligo Manufacturer in the world**

Industry leader in a fast growing market

Maintain work/life balance with flexible schedules and competitive benefits

Supplies pharmaceutical ingredients to top Biotech and Pharmaceutical companies in the world

Locations in Massachusetts, Ohio, and California

**20+ YEARS OF INNOVATION**

Personal and Professional development opportunities

Learn more at [www.avecia.com](http://www.avecia.com)

**Nitto AVECIA**

*A Clafin Hill Business Partner*



Tel: 508-473-7920

Fax: 508-634-1289

# OLIVA'S

---

## MARKET, CATERING

---

## & GOURMET GIFTS

---

83-85 East Main St. Milford, MA 01757  
[www.olivasmarket.com](http://www.olivasmarket.com)

*Serving Milford for 61 years  
In memory of Babe Oliva*

*A Claflin Hill Business Partner*

**Richardson**  
Financial Services, Inc.

165 Village Street, Medway, MA 02053  
p: (508) 533-2335 | f: (508) 533-7666 | [rfsria.com](http://rfsria.com)

Securities offered through J.W. Cole Financial, Inc. (JWC) Member  
FINRA/SIPC. Advisory services offered through Richardson  
Financial Services and JWC are unaffiliated entities.

*A Claflin Hill Business Partner*

CALL US TODAY!  
508-473-9190



VISIT  
Georgejroberts.com

## GEORGE J. ROBERTS

CERTIFIED PUBLIC ACCOUNTANTS

### TAX SERVICES

- Individual
- Corporate
- Partnership
- Trusts and Estates
- Advisory
- Projections

### FINANCIAL SERVICES

- Audits
- Reviews
- Compilations
- Outsourced CFO Services
- Non-Profit Services

208 Main Street, Suite 105  
Milford, MA. 01757

89 Main Street, Suite 109  
Medway MA.02053

*A Clafin Hill Business Partner*

# Spallone & Son

## Menswear \* Tailoring

Joe \* Rosalia \* Velia  
*Sartoria Professionale*

90 Main St., Milford, MA 01757

**508-473-4920**

[jspallone@yahoo.com](mailto:jspallone@yahoo.com)



Rose's Corner  
A Boutique Within A Store

90 Main Street  
Milford, MA 01757  
508.473.4920  
[rosaliesmorrison@yahoo.com](mailto:rosaliesmorrison@yahoo.com)



We are proud to support  
The Claflin Hill  
Symphony Orchestra



**RENTAL  
CENTER**

**Party & Equipment Rentals**

**www.495rental.com 508-473-5022**

189 Medway Rd. (Rt. 109) Milford, MA 01757

**Donate to Claflin Hill!**  
**Just click here.**

**Claflin Hill Foundation Support 2023-24**

*Claflin Hill is proud to acknowledge grants  
from the following Charitable Foundations  
in support of this 2023-24 Season –*

**The Hopedale Foundation  
The Harmon Family Foundation  
The Foundation for MetroWest  
The United Way of Worcester**

**Custom Alarm Service, Inc.**

*More Than Just An Alarm Company*

Security & Fire Alarms for your home or business  
Access Control / Video Surveillance Systems  
Systems are Installed and Serviced

**Email: [security@customalarm.com](mailto:security@customalarm.com)**

23 Providence St., Mendon, MA 01756

508-473-1028



**A.C. BARNES McNEVIN, III**  
SENIOR VICE PRESIDENT

175 Federal Street  
Boston, MA 02110

TEL 617.896.3500 DIRECT 617.896.3530  
FAX 617.227.5505  
1.800.556.8600

*A Claflin Hill Business Partner*

## **Milford Package Store**

270 Main Street, Milford

**508-473-0838**

[milfordpackage.com](http://milfordpackage.com)

*We have something special for your special occasions.*



# **SignsPlus**

**Fast,  
Professional  
Service!**

**89 South Main Street, Milford, MA**

Phone **508-478-5077**  
Fax **508-634-9825**

**[www.signs-plus.net](http://www.signs-plus.net)**

**Donations in Memory of Raymond T. Surapine  
The Raymond T. Surapine Memorial Conductor's Baton**

Sherry & Bob Browning  
Bette & Phil Gladstone  
Richard Goguen  
Irene Rugoletti  
Teresa & Richard Sergi  
Norman Schneider  
Carol Surapine  
Beth Surapine  
Carol Ann Thompson  
Nancy Wojick

Teri Herel, Principal Clarinet  
Warren Barnes, Clarinet  
Todd Brunel, Bass Clarinet  
Nan Foley, Principal Horn  
Paige McGrath, Horn  
Erich Ledebuhr, Principal Trumpet  
Jeffrey Hoefler, Trumpet  
Kevin Donegan, Trumpet  
Douglas Weeks, Trombone  
Henry Morel, Percussion  
Evan Lattimore, Percussion  
Pieter Struyk, Percussion  
Stella Owen, Keyboard  
Angel Valchinov, Concertmaster

Anne Kornfeld, Violin  
Susan Holcomb, Violin  
Sally Martin, Violin  
Lynne Canavan, Violin  
Margaritka Valchinov, Principal  
Second Violin  
Diane Plouffe, Violin  
Gordon Strick, Violin  
Jagan Nath Singh Khalsa, Violin  
Dimitar Petkov, Principal Viola  
David Schreiber, Viola  
Johann Soultz, Principal Cello  
\*Denotes CHSO Musician

**CHSO Musicians:**  
Amy Carroll, Flute & Piccolo  
Lori Halt, Flute

**Bob Choquette**  
Certified Technician

---

**Bob's Marine Service**

---

508-473-2523  
bobsmarineservice750@gmail.com

19 Uxbridge Rd (Route 16 )  
Mendon Ma 01756

**RESTAURANT 45**  
45 Milford Street  
Medway, MA 02053

---



**OPEN 7 DAYS A WEEK  
LUNCH & DINNER**

phone: 508-533-8171  
text: 508-321-7049  
management@45restaurant.com  
www.45restaurant.com

---

DINING • LOUNGE • PATIO • FUNCTIONS • CATERING • TAKE OUT

***A Clafin Hill Business Partner***



**508 473 0353**

**7 Charles River Street Milford, MA 01757**

**Owned and operated by the Lowinski-Loh family for 33 years!**



autogorepair@yahoo.com

www.autogoservice.com



PosterMyWall.com



320 East Main Street (Route 16)  
Milford, MA 01752 - (508) 422-8000

**www.MilfordNissan.com**

Milford Nissan - Family Owned and Operated  
Conveniently Located Minutes off Route 495 (Exit 19)  
200+ New Nissan's In-Stock to Choose!!  
100+ Pre-Owned Vehicles In-Stock Starting at Only \$5,995!!



**Milford Nissan Price Promise**  
Honest • Guaranteed • No False Promises  
That's the Milford Nissan Guarantee!!

**A Clafin Hill Business Partner**

# GALLO

MOVING & STORAGE

When it's time  
to move, make sure

*It's the  
Right  
Move.*

GALLO  
MOVING & STORAGE



Instantly estimate your  
move in

**3** Easy Steps!

- 1** Visit [GalloMoving.com](https://www.gallomoving.com)  
Click on  
**FREE DIY VIDEO SURVEY**
- 2** Take videos of your home
- 3** Receive your estimate



Move with Confidence. Move with Trust. Move with Gallo.  
508-422-4400 | [gallomoving.com](https://www.gallomoving.com)

*A Claflin Hill Business Partner*

*Consigli*  *Ruggerio*  
*Funeral Home, Inc.*

***Proud sponsor  
of  
The Claflin Hill  
Symphony  
Orchestra***

46 Water St  
Milford, MA, 01757  
Phone: 508-473-0513  
Toll Free: 800-675-0513  
Fax: 508-634-3662

*Virginia Larkin  
Realtor*



*“Our community is so fortunate to have such a  
First Class Symphony Orchestra.  
We are very grateful.”*

*508-473-9300*

*508-935-8270*

*vlarkinrealtor@verizon.net*

*A Claflin Hill Business Partner*